

BUILD YOUR FUTURE

佛山市胜邦钢结构有限公司



佛山市胜邦钢结构有限公司

FOSHAN SHENG BANG STEEL STRUCTURE CO.,LTD

地址: 中国广东省佛山市南海区狮山镇官窑石滘村平涌工业区
 电话: 86-757-6332 3396 0757-81002822
 0757-81196681 0757-81002668
 传真: 86-757-8119 6682
 网址: www.sbssteelstructure.com www.sbshouses.com
 电邮: sbs@sbsprefabhouse.com

Add: Pingyang Industrial District, Shipeng Village, Shishan Town,
 Nanhai District, Foshan City, Guangdong Province, China
 Tel: 86-757-6332 3396 0757-81002822
 0757-81196681 0757-81002668
 Fax: 86-757-8119 6682
 Http://www.sbssteelstructure.com http://www.sbshouses.com
 E-mail: sbs@sbsprefabhouse.com



微信扫码二维码



微信扫码二维码



微信扫码二维码

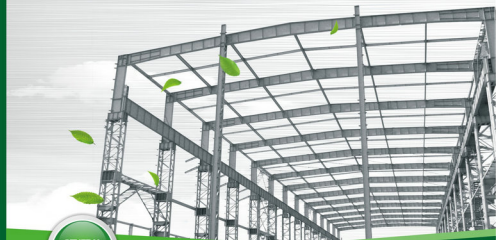


微信扫码二维码



BUILD YOUR FUTURE

筑创未来



GENERAL
 CATALOG
 目录

建造梦想！
BUILD DREAM

CATALOGUE 目录

公司简介	COMPANY PROFILE	-- 01-02
公司架构	THE COMPANY STRUCTURE	-- 03
证书资质	QUALIFICATION CERTIFICATES	-- 03-04
生产设备	PRODUCTION EQUIPMENT	-- 05-06
钢结构建筑	STEEL STRUCTURE HOUSE	-- 07-08
焊接工艺	PROCESS PARAMETERS	-- 09-10
除锈工艺	SHOT BLASTING TECHINCS	-- 11
设计实力及安装指导	DESIGN CAPABILITY & INSTALLATION GUIDE	-- 12-14
钢结构工程案例	STEEL STRUCTURE HOUSE PROJECT CASES	-- 15-28
集装箱房介绍	CONTAINER HOUSE INTRODUCTION	-- 29-38
集装箱房工程案例	CONTAINER HOUSING PROJECT	-- 39-42
钢结构房屋材料简介	INTRODUCTION OF STEEL STRUCTURE HOUSE MATERIALS	-- 43-48
喷涂产线	AUTOMATIC POWDER COATING LINE	-- 49
喷涂工程案例	POWDER COATING PROJECT CASES	-- 50

公司简介

佛山市胜邦钢结构有限公司（简称“胜邦钢构”）是一家集营销、设计、研发、制造、施工为一体，专业承建钢结构建筑的发展型企业。并通过国际ISO9001:2008质量管理体系认证和VIA证、SGS工厂体系认证。近年的飞速发展，培养了一大批高素质营销、技术人才和现场施工队伍。胜邦以客户需求为导向，为客户提供合理的、科学的、有效的解决方案，以务实进取、不断创新、团结一致的精神为客户提供全方位的服务。

胜邦钢构制作钢结构厂房、仓库、物流中心、体育馆、飞机库、钢构超市、高层建筑钢构、集装箱房屋等钢结构建筑。胜邦钢构目前拥有大型钢构生产设备和自动喷涂生产线，能满足不同客户的需求。产品热销到中东、非洲、东南亚、欧洲、南美洲等30多个国家和地区。

企业文化：

公司以“筑创未来”为使命
 以“安全、美观、快捷、卓越、环保”为经营理念，
 以“态度、速度、广厦！效率、效益、效能”为管理方针！



COMPANY PROFILE

Foshan Sheng Bang Steel Structure Co., Ltd. (for short "SBS") is a rapid developing enterprise integrating into marketing, design, development, manufacture and construction. SBS has been approved and certified by international ISO9001:2008 quality management system and BV certificate ,SGS factory system. We have train ed many highly qualified marketing and technical personnel and on-site construction teams in recent year. SBS is being customer demand-oriented and provides a full range of services with rational, scientific and effective solutions, working as a practical,progressive, innovative & solidarity company.

SBS specializes in steel structure plant, warehouse, logistic center, stadium , hangar, steel-structure supermarket, high-rise steel construction, container house and other steel-structure building. SBS has large steel structure production equipments and automatic spraying production line to meet various requirements from different customers. Our products are sold to more than 30 countries and regions covering Middle East, Africa, Southeast Asia, Europe, South America, etc.

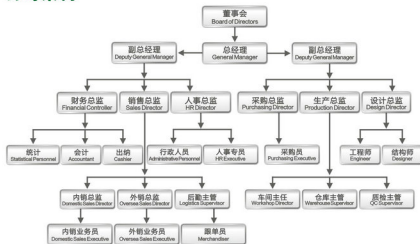
ENTERPRISE CULTURE

We take "build your future" as our mission.
 We regard "safety, aesthetic, speed, excellence and environmental protection as operation concept.
 We treat "attitude, speed, extent, efficiency,profit effectiveness" as company administrative policy.



THE COMPANY STRUCTURE

公司架构



QUALIFICATION CERTIFICATES

证书资质



SGS 认证
SGS CERTIFICATE



SGS 认证供应商
SGS AUDITED SUPPLIER



ISO 证书
ISO CERTIFICATE



BV 证书
BV CERTIFICATE



BV 认证供应商
BV ASSESSED SUPPLIER



BV 认证报告
BV ASSESSED REPORT



船级社认证 (集装箱)
CLASSIFICATION SOCIETY C.S.C. APPROVAL
CERTIFICATE (CONTAINER HOUSE)



组织机构代码
ORGANIZATION CODE



安全生产证书
PRODUCTION SAFETY
CERTIFICATE



税务登记
TAX REGISTRATION CERTIFICATE



营业执照
BUSINESS LICENSE

PRODUCTION EQUIPMENT 生产设备

我公司占地面积为2.5万平方米，拥有各类型大型钢结构先进设备和生产线，进行严谨的生产加工控制，和专业化、流程化的生产制造。科学的生产管理体系使我们的产品具有优良的性能，从而与业界钢结构的发展并驾齐驱。

Our company covers about 25,000 square meters. Equipped with various advanced imported equipments for steel structure manufacture, we ensure high production capability and professional solution for our customers. Scientific production management system enables our products to have excellent performance and keep pace with steel structure development in the world.



多头数控切割机
MULTI-HEAD DIGITAL CUTTING MACHINE



H型钢自动组装机
H SECTION STEEL AUTO ASSEMBLY MACHINE



SP系列H300-1118-1000型
深通过式多头机切带卷机
SP SERIES H300-1118-1000
DEEP THROUGH MULTI-HEAD CUTTING MACHINE



M20系列M20-2x1000门框自动埋弧焊机
M20 SERIES M20-2X1000 AUTOMATIC SUBMERGED ARC WELDING MACHINE



生产线
PRODUCTION LINE



冲床机
PUNCHING MACHINE



数控平面钻床
DIGITAL CONTROL DRILLING MACHINE



打磨机
SANDER



JZ-480A系列H型钢翼缘矫正机
JZ-480A SERIES H SECTION STEEL FLANGE
STRAIGHTENING MACHINE



液压剪式剪板机
HYDRAULIC PLATE SHEARS



环保回收设备
ENVIRONMENTAL FRIENDLY
AND RECYCLING EQUIPMENT

STEEL STRUCTURE HOUSE

钢结构建筑

🔗 钢结构建筑特性介绍 INTRODUCTION OF STEEL STRUCTURE HOUSE

钢结构建筑产品是以钢材为主要结构材料，主要的承重构件包括钢柱子、钢梁、钢结构基础、钢屋架等，相比于砖混结构建筑，钢结构的优势自重轻、抗震性能好；施工方便、工期短；可设计成各种造型、尺度、空间的新型结构设计；可采用开放式大开跨布置，使建筑平面能够合理分隔，综合造价低。

钢结构通常用于高层、大跨度、体型复杂、荷载或吊车起重量大、有较大振动、高温车间、密封性要求高、要求能活动或经常装卸的结构。广泛用于大厦、体育馆、歌剧院、大桥、电视塔、仓棚、工厂、住宅和临时建筑等。

Steel structure house uses steel plate as primary material, the main load-carrying components include steel column, steel girder, steel structure foundation and steel roof frame etc. Compared with reinforced concrete and brick construction, steel structure house has outstanding advantages of being light weight, good earthquake resistance performance, easy installation and short construction time. The house can be various design, various specification and space structure, open type and wide span layout. Therefore, the steel structure house can be partitioned reasonably, so that the comprehensive construction cost will be low for steel structure house.

Steel structure house is usually used in high-rise, large span and complex structure building which is in heavy loads, crane lifting capacity is large. The structure is suitable for high temperature workshop, satisfy good sealing performance housing, movable or frequent assembled structure. The steel structure is widely uses in multi-stories building, stadium, opera house, modern bridge, television tower, warehouse, workshop, residential housing, temporary construction and so on.

🏠 钢结构仓库 STEEL STRUCTURE WAREHOUSE



(一) 制作流程图

PRODUCTION FLOWCHART



1:设计图纸
Design Drawing



2:生产图纸
Shop Drawing



3:备料
Prepare material



4:多头数控CNC切割机
Multi-head digital cutting machine



8:铆工制作
Rivet manufacture



7:翼缘板直度
Flange plate of straightening



6:自动埋弧焊
Automatic submerged arc welding



5:组立
Assembly



9:焊接
Welding



10:半成品
Semi-manufacture



11:打砂除锈
Shot blasting and descaling



12:喷漆加工
Spray paint processing



16:全部完成
Finish product



15:屋盖、墙架施工
Roof and wall installation



14:钢架安装
Steel structure installation



13:运输
Transportation

PROCESS PARAMETERS 焊接工艺

(一) 气体保护焊

GAS SHIELDED ARC WELDING

钢结构装配后常用气体保护焊进行焊接。气体保护焊是利用气体作为电弧介质并保护电弧和焊接区的电弧焊。气体保护焊具有电弧稳定、飞溅少、焊件表面变形小等特点，适用于空间位置的各种机械化焊接。
Steel structures commonly use GMAW welding after assembly. Gas shielded arc welding enjoys good visibility to the gas as a medium and takes the protection for the arc and welding area. Gas shielded arc welding is quite suitable for mechanized welding with spatial location.

气体焊接工艺参数的选择指南 SELECTION GUIDE FOR GAS WELDING PROCESS PARAMETERS

A1 焊丝直径 WELDING WIRE DIAMETER

一般情况下，可根据表A1选用焊丝。

Generally, the wire can be selected according to Table A1

焊丝直径范围

母材厚度	≤4	>4
焊丝直径	0.5-1.2	1.0-1.6

A2 焊丝伸长率 WELDING WIRE ELONGATION

A2.1 焊丝伸长率与焊丝直径、焊接电流及焊接电压有关。

The welding wire elongation relates to the wire diameter, the welding electric current and the welding voltage.

A2.2 焊接过程中，导电嘴到母材间的距离一般为焊丝直径的

10-15倍。
During the welding process, the distance between contact tube to the base material is generally as 10-15 times as the welding wire diameter.

A3 焊接电流 WELDING ELECTRIC CURRENT

A3.1 在保证母材焊透又不致烧穿的原则下，应根据母材厚度、接头形式以及焊丝直径正确选用焊接电流。
Stick up the principle that base materials are in well welding penetration, welding current should be accurately selected in accordance with the thickness of base materials, joint type and the wire diameter.

A3.2 各种直径的焊丝常用的焊接电流范围见表A2

The range of welding electric current in common use with variety of welding wire diameters shown in Table A2.

焊丝直径	0.5	0.6	0.8	1.0	1.2	1.6
焊接电流	30-70	40-90	50-120	70-190	90-350	150-500

(二) 埋弧自动焊

AUTOMATIC SUBMERGED ARC WELDING

H型钢构件组立后主要用埋弧自动焊(龙门焊)进行焊接。埋弧自动焊是电弧在焊剂层下燃烧的一种电弧焊方法，其焊缝质量高，熔渣隔绝空气的保护效果好，焊接参数可以通过自动调节保持稳定，焊缝成形稳定，机械性能好。

After H type steel structure being assembly, automatic submerged arc welding (gantry welding) is commonly taken into welding process. The automatic submerged arc welding is a kind of method named electric arc welding that the arc burning would be occurred in flux layers. Automatic submerged arc welding has outstanding advantages, there are high weld quality and brilliant protective effect of slag isolated from the air. Furthermore, the welding parameters can be automatically adjusted to maintain stability with stable welded composition and remarkable mechanical properties.

焊剂和焊丝的选择 THE SELECTION OF FLUX AND WIRE

在埋弧焊接可选用高锰高硅型焊剂(HJ431)，配合H08MnA焊丝。或选用低锰、无锰型焊剂(如HJ130、HJ230等)，配合H08MnA、H10Mn2焊丝。

Mild steel in welding process can choose the flux with high manganese and silicon (HJ431) and work in with the wire in the type of H08MnA. While it could also use type flux with low manganese or no manganese (such as HJ130, HJ230, etc.) and match with the type of H08MnA or H10Mn2 wire.

1. 低合金高强度钢埋弧焊可选用中锰中硅(如HJ330)或低锰中硅(如HJ250)型焊剂配合适当低合金高强度钢焊丝(如：H08MnMoA、H08Mn2MoA等)。

Welding with high strength and low alloy steel can choose the flux with fierce silicon (such as HJ330) or low manganese silicon (such as HJ250) and work in with the wire in appropriate high strength and low alloy steel (such as: H08MnMoA, H08Mn2MoA, etc.)

2. 耐热钢、低合金、耐锈钢的埋弧焊可选用中硅或低硅型焊剂配合相应的合金钢焊丝。

Steel in heat resistant, low manganese and corrosion preventive can select flux with silicon or low silicon and with corresponding alloy steel wire during the welding process.

3. 铁基体、奥氏体等合金钢，一般选用碱度较高的熔渣焊剂或低碱、粘结焊剂，以降低合金元素的烧损及添加合金。

The high alloy steels such as ferrite, the austenitic commonly choose the high alkalinity granulated flux or the solder bonding in order to reduce the burning loss and penetrated alloy of alloy elements.

(三) 全熔透对接焊缝

FULL PENETRATION BUTT WELDING

钢结构设计中的对接焊缝及中厚板连接焊缝等要求 采用全熔透焊缝。全熔透焊缝是焊接过程中熔透母材的焊接方法，焊缝强度比较高，质量稳定。工厂一般采用成型工艺，将坡口的母材熔合好，如图所示：

The design for steel butt weld and welding plate connections are commonly required the full penetration welding into use. Full penetration welding is a welding method that penetrates welding fittings are in the welding process with high strength weld and stable quality. Manufacturers often have double-sided minding process to fusion the groove base metal in remarkable condition, as shown:



全熔透焊缝等级及要求 THE GRADE OF FULL PENETRATION WELDS AND REQUIREMENTS

I级：不允许有裂纹、未熔合、未焊透和条状夹渣等四种缺陷存在，允许有一定数量和一定尺寸的圆形缺陷存在。

Grade I: Four defects are not allowed to be existed, they are cracks, lack of fusion, incomplete penetration and stripe slag. It is permitted to have a certain number and size of circular defects.

II级：不允许有裂纹、未熔合、未焊透等三种缺陷存在，允许有一定数量、一定尺寸的条状夹渣和圆形缺陷存在。

Grade II: Three defects are not allowed to be existed, they are cracks, lack of fusion and incomplete penetration. It is permitted to have a certain number and size of circular defects and the presence of stripe slag.

III级：不允许有裂纹、未熔合以及对口焊和垫板的单面焊中的未焊透存在，允许一定数量一定尺寸的条状夹渣和圆形缺陷及未焊透存在。

Grade III: It is not allowed to have cracks, lack of fusion and two-sided weld and padded welding plate in the presence of incomplete penetration. It is permitted to exist a certain number and size of stripe slag, circular defects and incomplete penetration.

IV级：焊缝缺陷超过III级。

Grade IV: Batch weld defects are more than those Grade III.

对接焊缝及完全熔透组合焊缝尺寸允许偏差应符合表A3的规定。

The allowable deviation of weld size combination to Full penetration and butt welding shall comply with the provisions in Table A3.

序号	项目	图例	允许偏差		
			一级	二级	三级
1	对接焊缝 余高		h ≤ 2.0	0-3.0	B < 20, 0-4.0
			B > 2.0	0-4.0	B > 20, 0-5.0
1	对接焊缝 错边		S < 0.1h	且 ≤ 2.0	D < 0.1h
			且 ≤ 2.0	且 ≤ 3.0	

SHOT BLASTING TECHNICS 除锈工艺

国家标准GB8923-88《涂装前钢材表面锈蚀等级和除锈等级》钢结构加工完成后其在涂装前常用抛丸的方法进行除锈。

National standard GB8923-88 named « Grades of Rust and Rust Removal on Steel Surface before Painting» stipulates that shot blasting is commonly used for rust removal when steel structure parts are completely processed before painting.



▲ 原材料 RAW MATERIALS

未涂装过的钢材表面根据氧化皮的覆盖情况与点蚀发生的轻重程度分为A、B、C、D四个表面锈蚀等级。

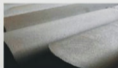
The grades of the unpainted steel surface are presented by A, B, C, D according to the coverage extent of the oxide layer and the serious degree of the spot erosion.



▲ Sa1.0级 GRADE SA 1.0

轻度的喷射除锈，钢材表面可见的油脂、污垢、无附着的不平的氧化皮、铁锈、油漆涂层等附着物。

Slight de-rusting through blast rust cleaning. The surface must be free of grease, dirt and attached unfixed oxide coat, rust, paint coat and other attachments.



▲ Sa2.5级 GRADE SA 2.5

非常彻底的喷射或抛射除锈，钢材表面可见的油脂、污垢、无附着的不平的氧化皮、铁锈、油漆涂层等附着物，任何残留的痕迹仅是点状或条状的轻微色斑。

Thorough de-rusting blast rust cleaning. The surface must be free of grease, dirt and attached unfixed oxide coat, rust, paint coat and other attachments. Any slight traces left are strip or spot-like light-color spots.



▲ Sa3.0级 GRADE SA 3.0

使钢材表面非常洁净的喷射或抛射除锈，钢材表面可见的油脂、污垢、无附着的不平的氧化皮、铁锈、油漆涂层等附着物，该表面显示均匀的金属光泽。

Stainless de-rusting thorough blast rust cleaning. No grease or dirty, oxide coating, rust, paint coat and other attachments can be found on the steel surface, the metal surface must present the metallic luster.

DESIGN CAPABILITY & INSTALLATION GUIDE 设计实力及安装指导



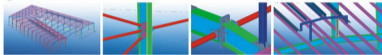
胜邦钢结构有限公司拥有各类专业设计人员，能自主进行各项产品的研发和设计不同的钢结构建筑，多数在钢结构设计行业三年以上的工作经验。本公司使用国内外各类先进的设计软件进行测量设计、透视图、施工图、详图等专业设计，满足不同客户的需求，目前设计制作完成各类国内外钢结构工程，深受海外客户的好评。

Shengbang Steel Structure Co., Ltd has professional designers who have capacities to have research and development(R&D) and design various steel structure buildings. Most of our professional designers have at least more than 3 year working experience on steel structure design. Our company adopts many advanced domestic and foreign design software to draw blue print design, perspective view, construction drawing and detail drawing to meet various requirements from different customers. At present, we have designed and produced plenty of foreign steel structure projects successfully and won high praises from overseas customers.

▲ 安装指导 INSTALLATION GUIDE

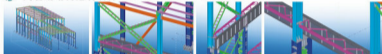


荷兰钢结构建筑项目 THE DUTCH STEEL STRUCTURE BUILDING PROJECT



U型钢结构展厅 U-SHAPED STEEL STRUCTURE EXHIBITION HALL
柱间支撑节点 COLUMN BRACING JOINT
支撑节点 BRACING JOINT
气楼大样 CLEARSTOREY

茂名钢结构建筑项目 MAOMING STEEL STRUCTURE BUILDING PROJECT

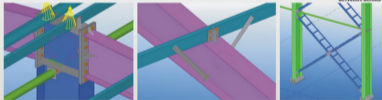


整体透视图 OVERALL PERSPECTIVE VIEW
柱间支撑 COLUMN BRACING
吊车承载梁 SUPPORTING BEAM OF CRANE RAIL
承载梁节点 SUPPORTING BEAM JOINT

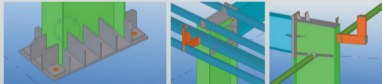
印尼船厂 INDONESIAN SHIPYARD



整体透视图 OVERALL PERSPECTIVE VIEW
吊车承载梁 SUPPORTING BEAM OF CRANE RAIL
梁梁连接 CONNECTION BETWEEN BEAMS

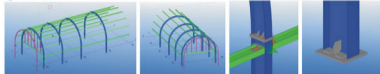


梁柱连接 CONNECTION BETWEEN BEAM & COLUMN
隅撑 KNEE BRACING
柱间支撑 COLUMN BRACING



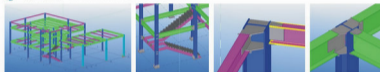
柱脚大样 COLUMN BASE VIEW
水磨线架 GUTTER BRACKET
水磨线架 GUTTER BRACKET

停车场入口 PARKING ENTRANCE



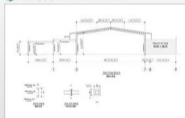
整体透视图 OVERALL PERSPECTIVE VIEW
整体透视图 OVERALL PERSPECTIVE VIEW
主次梁连接 CONNECTION OF MAIN & SECONDARY BEAMS
柱脚节点 COLUMN BASE JOINT

映红园林 YINGHONG GARDEN OFFICE BUILDING

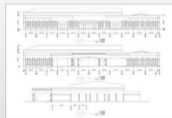


整体透视图 OVERALL PERSPECTIVE VIEW
星形 STAR
梁柱连接 CONNECTION OF COLUMN & BEAM
梁柱连接 CONNECTION OF COLUMN & BEAM

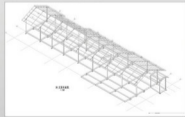
设计图 DESIGN DRAWING



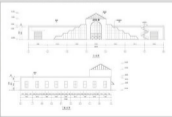
菲律宾克拉克会议中心
PHILIPPINES CONFERENCE CENTER



菲律宾克拉克会议中心
PHILIPPINES CONFERENCE CENTER



蓝灯会所
LIANTANG CLUB

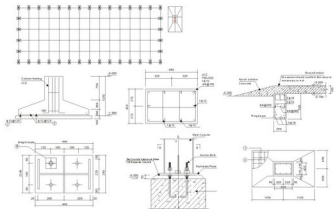


建材超市方案
BUILDING MATERIAL SUPERMARKET PLAN

STEEL STRUCTURE HOUSE PROJECT CASES 钢结构工程案例

工程名称：中国机械工业第一建设工程公司——阿曼仓库
NAME OF THE PROJECT: The First Construction of China Mechanical Industry
Company——Oman Warehouse

规格尺寸: 33m*50m*5m(W/L*Y*H)=17.1m*12m*3m——2650m²
Specification: 33m*50m*5m(W/L*Y*H)=17.1m*12m*3m——2650m²



NOTE

- 1) If the ring beam can not connect the column footing completely, the size of the column can be increase appropriately, but the original design can not be affected. Please send it back to our engineer to confirm if you have any questions.
- 2) This approach only for material choice general practices, the owner should determine whether it apply to the project according to the local soil conditions.
- 3) The free advice and practices above, we shall not be liable for any direct and indirect responsibility.

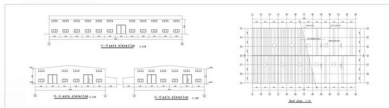
NOTE

- 1) ● Φ HRB235 rebar (I class rebar, fy=235N/mm²);
- 2) ● Φ HRB335 rebar (II class rebar, fy=335N/mm²);
- 3) ● Φ HRB400 rebar (III class rebar, fy=400N/mm²);
- 4) Foundation pit C10 subsoil 100 thick, the other concrete C25.

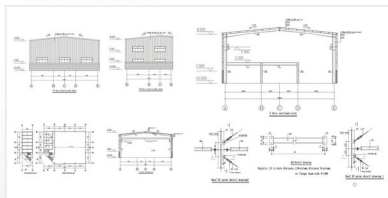
地基图 FOUNDATION DRAWING



利比亚仓库 2736m²
LIBYA WAREHOUSE



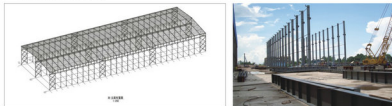
加纳厂房 1500m²+办公室 423m²
GHANA WORKSHOP+OFFICE PROJECT



摩洛哥弧形仓库 2600m²
MOROCCO ARC WAREHOUSE



印尼船厂 18000m²
INDONESIAN SHIPYARD



泰国仓库 25000m²
THAILAND WAREHOUSE



马召尔厂房 20000m²
MARSHALL PLANT



几内亚厂房 6500m²
GUINEA PLANT

刚果工程 3500m²
CONGO PROJECT



威廉斯塔商场+车库入口 8000m²
WILLEMSTAD SHOPPING MALL +
GARAGE ENTRANCE



厂房+净化车间 18000m²
WORKSHOP + CLEANING ROOM



赞比亚厂房 20000m²
ZAMBIA PLANT



尼日尼亚厂房 25000m²
NIGERIA PLANT



马拉维仓库 36000m²
MALAWI WAREHOUSE



❶ 坦桑尼亚车间 10000m²
TANZANIA WORKSHOP



❷ 阿尔及利亚二层办公室 3500m²
ALGERIA TWO FLOOR OFFICE



❸ 俄罗斯仓库 2000m²
RUSSIAN WAREHOUSE



❹ 澳洲标杆5000套
AUSTRALIA POLE 5000 SETS



❺ 非洲仓库 5000m²
AFRICA WAREHOUSE



❻ 马来西亚钢结构制品8000套
MALAYSIA STEEL PARTS & COMPONENTS



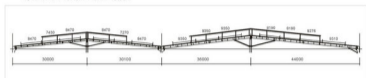
❼ 莫桑比克教堂 1800m²
MOZAMBIQUE CHURCH



❽ 喀里多尼亚仓库 2500m²
CALEDONIA WAREHOUSE



❾ 工程名称：广东精工里亚特特种线材厂房
NAME OF THE PROJECT: Guangdong Jingong Liya Special Wire Factory
规格尺寸：107.9m*140.5m*13.33m
Specification: 107.9m*140.5m*13.33m



海南清澜半岛项目 HAINAN QINGLAN PENINSULA ON-SITE



透视
BAR

模型图
STEEL FRAME



健身房
GYMNASIUM



会展中心
CONVENTION CENTER



钢梁连接
BEAM LINK



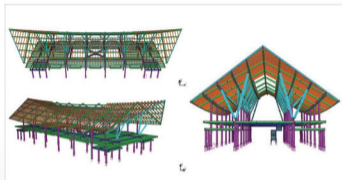
钢梁与预埋件连接
CONNECTION OF STEEL BEAMS AND
EMBEDDED PARTS



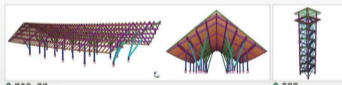
楼层结构
THE FLOOR STRUCTURE



安装完毕
INSTALLATION COMPLETED



会展中心
CONVENTION CENTER



健身房、酒吧
GYMNASIUM, BAR

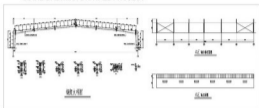


景观塔
LANDSCAPE TOWER



工程全景图
ON-SITE INSTALLATION PANORAMA

嘉禾羽毛球馆项目工程
JIAHE BADMINTON HALL PROJECT



△ 外观图
OUTSIDE VIEW



△ 钢结构预制品
STEEL STRUCTURE PREFABRICATED PRODUCT



△ 现场拼装
PIE-ASSEMBLY ON SITE



△ 钢架图
STEEL FRAME PICTURE



△ 钢架图
STEEL FRAME PICTURE



△ 高空吊装图
HIGH ALTITUDE HOISTING VIEW



△ 吊索图
RIGGING PICTURE



△ 吊索图
RIGGING PICTURE



△ 节点
CONNECTION



△ 吊索
RIGGING PILE



△ 山墙
CABLE WALL



△ 侧墙
SIDE WALL



△ 整体图
OVERALL GRAPH



△ 整体图
OVERALL GRAPH



△ 山墙
CABLE WALL



△ 整体图
OVERALL GRAPH



△ 广西铝厂 25000㎡
GUANGXI ALUMINUM FACTORY



△ 广西铝厂 25000㎡
GUANGXI ALUMINUM FACTORY



△ 广西铝业厂房 28000㎡
GUANGXI ALUMINUM INDUSTRY PROJECT



△ 中船工程
SHIPYARD IN CHINA



△ 中船工程
SHIPYARD IN CHINA



△ 船厂制作车间 6900㎡
SHIPYARD PRODUCTION WORKSHOP



△ 江门厂房 15800㎡
JIANGMEN PLANT



△ 大众 12000㎡
FAW-VOLKSWAGEN WORKSHOP PROJECT



△ 蓝塘会所
LIANTANG CLUBHOUSE



△ 广西别墅A 8000㎡
GUANGXI ALUMINUM VILLA PROJECT



△ 广西别墅B
GUANGXI ALUMINUM VILLA PROJECT



△ 广西材料展示园 15000㎡
GUANGXI ALUMINUM SHICHANG GARDEN PROJECT



南海狮山钢构厂房
NANHAI SHISHAN STEEL STRUCTURE FACTORY



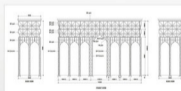
△ 南海狮山钢构厂房 6780㎡
NANHAI SHISHAN STEEL STRUCTURE FACTORY



△ 南海狮山钢构厂房 6780㎡
NANHAI SHISHAN STEEL STRUCTURE FACTORY



△ 精工厂房 15116.8㎡
JINGDONG FACTORY PROJECT



△ 番禺商场钢构大门
PANWU SHOPPING MALL STEEL DOOR



△ 罗村合丰钢构平台 4800㎡
WOORI HENG PLATFORM

CONTAINER HOUSING 集装箱房屋

集装箱产品介绍：CONTAINER HOUSE INTRODUCTION

集装箱房屋是一种可移动、可重复使用的建筑产品。该产品采用标准化设计，工厂化生产，以箱体为基本单元，可单独使用，也可通过水平及垂直方向的不同组合形成宽大的使用空间。箱体单元结构是采用型钢及冷弯薄壁型钢焊接而成的标准构件，箱与箱之间通过螺栓连接而成，结构简单，安装方便快捷。产品用途广泛，可广泛应用于商业地产开发公司售楼展厅、产品销售展厅、临时接待中心、商业临时办公室、商铺等。

Container house is a construction product which is mobile, prefabricated and reusable. The house adopts standardized design, factory production, and takes cabinet as the elemental unit. Container house is not only fit for individual usage, but also for spacious room application formed by various horizontal and vertical direction combination. Container house structure uses standardized structural elements that are welded by profile steel or cold-formed thin wall steel. Combined container houses is connected and fastened by high strength screws, so that house structure is simple, easy to install. Container house is widely used for real estate development company exhibition hall, product showroom, temporary reception center, commercial temporary office, store and so on.

钢构 STEEL FRAMEWORK

钢构件由方管，2.0mm~4.0mm冷轧弯板，C型钢和轧钢焊接而成，8个国际标准角件位于集装箱上下底座。
The steel framework is welded by square tube, 2.0mm~4.0mm cold-rolling bending plate, C section steel and steel rolling. 8 international standard angle fittings are located on the top and bottom base of container house.

防锈 CORROSION PREVENTION

钢构件表面清除浮灰和杂质，擦除油垢和污垢，去除附着不牢的氧化皮、铁锈和油漆涂层及其他诸如焊渣、焊绳飞溅物、可溶性盐类等，除锈等级达到St2级。

The sanding machine eliminates ash and debris, clears oil, dirt, oxide coating, rust and paint coating, also removes welding slag, welding splash soluble salts and so on. The stain removal rank achieves level St2.

排水 DRAINAGE

1. 水管排水：排水管隐藏在箱式房四角的钢柱内腔，在屋顶四角的角件上开孔插入排水管，从屋顶角件接口连接到地面角件的接口。

Waterpipes drainage: The drain pipes are hidden in the internal corners of four steel columns. The pipes are inserted into the holes of four corner fittings on the roof, and are connected from roof corner fittings to floor corner fittings.

2. 自由排水：集装箱房屋采用密封焊接，也可设计成自由排水方式。

Free drainage: The roof of the container house is welded by hermetical steel plates, so it can also be designed into free drainage.



INTRODUCTION OF CONTAINER HOUSE MATERIALS 集装箱房屋材料简介

(一) 钢材材料

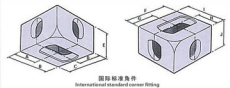
STEEL FRAME MATERIALS

国际ISO标准角件 ISO INTERNATIONAL STANDARD CORNER FITTINGS



本公司出口集装箱采用国际海运集装箱ISO 1161:1984标准角件，角件的设计、结构方式和使用的材料满足GB/T 5338、GB/T 7392和GB/T 16563的作业和试验要求的规范。当角件通过四个角件的顶孔起吊时，吊具转角与角件内腔上表面最小承载面积应为800平方米(1.24m²)。

SBS container house adopts international shipping container standard corner fittings ISO 1161:1984. Design, structure and materials of corner fittings satisfy the requirements of GB/T 5338, GB/T 7392 and GB/T 16563 operations and test regulations. The minimum loaded area is between twist lock and interface of corner fittings should be 800m²(1.24m²), when the lifting device lift the container house at four top corner fitting holes.



国际标准角件
International standard corner fitting

A 101.5mm	F 170mm
B 170mm	G 101.5mm
C 162mm	H 80mm
D 80mm	I 162mm
E 116mm	J 116mm

其他钢构件 OTHER STEEL COMPONENTS



底座
BOTTOM (STEEL FRAME)



顶盖
TOP (STEEL FRAME)



立柱
COLUMN (BENDED STEEL SHEET)



镀锌彩板
GALVANIZED STEEL COVER SHEET

(二) 夹芯板组装式集装箱房屋

SANDWICH PANEL ASSEMBLED TYPE
CONTAINER HOUSE

夹芯板组装式集装箱房屋用途广泛，尺寸符合国际通用集装箱标准，设计的结构和连接细节，便于起吊、运输、快速装配和重复使用。夹芯板组装式集装箱房屋是由夹芯板墙面、夹芯板墙面和钢骨架组成的，具备通用性的轻型建筑模块，夹芯板组装式集装箱房屋的屋顶、地板、墙面均可以按照用途，增减隔热材料以及隔热厚度，此类集装箱房屋物美价廉，深受市场欢迎。

Sandwich panel assembled type container house is extensively used in many construction areas. The size conforms to international standard of container house. Designed structure and connection details are adapted to hoisting, transportation, fast assembled and reuse. The house is composed of sandwich panel in roof and wall and steel framework. As a result, container house has the features of light construction module versatility. The thickness of the thermal insulation material and heat insulation for roof tile, floor and wall body of container house can be changed by different usage. The sandwich panel assembled type container house is excellent in quality and reasonable in price so that it has enjoyed high praises from the market.



(三) 轻钢龙骨组装式集装箱房屋

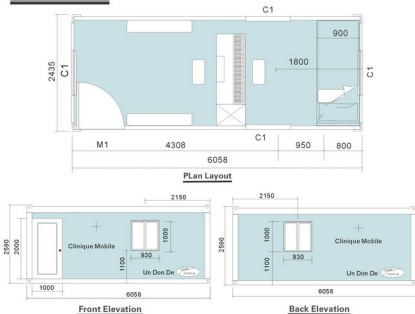
LIGHT STEEL FRAMED ASSEMBLED CONTAINER HOUSE

轻钢龙骨组装式集装箱房屋结合了夹芯板组装式集装箱房屋和轻钢龙骨房屋的制作方法，在墙体钢结构以优质冷轧连续镀锌卷板为原材料，采用冷弯薄壁型钢制作工艺，墙体内部以玻璃保温棉为填充物，具备良好的保温、隔热、隔音性能。墙体材料选择多样化，使集装箱房屋的外观造型更加丰富多样，轻质复合墙体大大提升了组装式集装箱房屋的坚固程度和舒适程度。

Light steel framed assembled container house integrates the manufacture method of sandwich panel assembled container house and light steel framed house. The steel frames of wall body takes high quality cold rolling hot dip galvanized plate as materials, and used employs production process method of cold bending form steel plate. Interior wall is filled with the glass wool, thus container house has good heat preservation, heat insulation and sound insulation performance. Wall body can select many materials to vary appearance and modeling of house. Light composite wall greatly improves strength and comfort standard of light steel framed assembled container house.

龙骨集装箱图纸

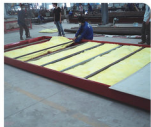
Light Steel Frame Container Drawing



安装流程图 INSTALLATION FLOWCHART



1. 底座 CHASSIS



2. 顶部隔热处理 TOP FRAME HEAT INSULATION



3. 龙骨安装 LIGHT STEEL FRAMED INSTALLATION



4. 硅钙板安装 CALCIUM SILICATE BOARD INSTALLATION



5. 外墙水泥纤维板安装 EXTERIOR WALL CEMENT FIBERBOARD INSTALLATION



6. 顶部太阳能供电安装 THE TOP SOLAR POWER SUPPLY INSTALLATION



7. 内饰装饰 INTERIOR DECORATION



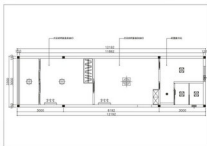
8. 内饰布置 INTERIOR LAYOUT



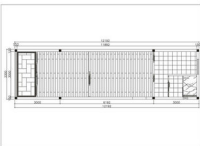
9. 安装完成 INSTALLATION COMPLETE

(四) 40尺龙骨别墅介绍

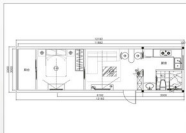
40 FEET KEEL CONTAINER HOUSE



△ 电灯布置图
ELECTRIC LIGHT LAYOUT



△ 地砖布置设计图
TILE LAYOUT DESIGN



△ 室内布置设计图
INTERIOR LAYOUT DESIGN



△ 3D效果图
3D EFFECT DRAWING



△ 实体外观图
REAL OBJECT EXTERIOR VIEW



△ 实体外观图
REAL OBJECT EXTERIOR VIEW



△ 3D效果图
3D EFFECT DRAWING



△ 大厅布置图
LIVING ROOM LAYOUT



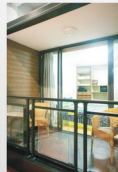
△ 室内布置图
INTERIOR LAYOUT



△ 卧室布置图
BEDROOM LAYOUT



△ 厨房布置图
KITCHEN LAYOUT



△ 阳台布置图
BALCONY LAYOUT



◎ 两层架空组合房屋

这个两层架空组合房屋最吸引人的特点是二楼卧室的卧室，这样在顶层就形成了一个很方便的停车库，高层是由客厅—餐厅—厨房单元组合而成。第二层包含两个卧室，和一个多功能媒体室。媒体室环绕着一个户外平台，平台围绕一个矩形的露台，封闭式的露台完美地连接到或更方便地为人提供了私密的空间，而且提供了漂亮景观并开放的环境。



◎ TWO LAYERS OF OVERHEAD COMBINED HOUSE

Two layers of overhead combined house's most interesting feature is a bridging bar of bedrooms, that creates a convenient carport on the ground floor below. The ground floor is made up of a living-dining-kitchen unit. The second floor contains two bedrooms, and a versatile media room that opens to an outdoor terrace that connects to a enclosed sleeping porch. The sleeping porch is perfect as a secondary space for entertaining or a convenient children's play space, and provides great views of the house's surroundings.



◎ 三箱组合房

三箱组合房是一个不规则的组合房，它具有现代模块化的特色，提供了空间的独特性和内外结构。由外部的形式创建的负空间产生单独融合的外部空间。在广阔的内部空间可以看到强烈的建筑环境。



◎ 3 CASES OF COMBINATION ROOM

3 cases of combination room is a study in irregularity. It exhibits Modern Modular's ability to provide a uniqueness of space, both inside and outside the structure. Negative space created by the exterior form gives rise to individually implied exterior spaces. Within the interior expansive views to the surrounding site allow for a strong connection with the building's environment.



◎ 轻钢龙骨组装式集装箱房屋

轻钢龙骨组装式集装箱房屋结合了夹芯板组装式集装箱房屋和轻钢龙骨房屋的制作方法。四周墙体钢结构以及泡沫夹芯板的镀锌彩板为原材料，采用冷弯薄壁型制作工艺，墙体内部以玻璃岩棉为填充物，具有良好保温、隔热、隔音性能，墙体材料选择多样化，使集装箱房屋的外观造型更加丰富多样，轻钢复合墙体大大提高了组装式集装箱房屋的安装速度和施工进度。



◎ LIGHT STEEL FRAMED ASSEMBLED CONTAINER HOUSE

Light steel framed assembled container house integrates the manufacture method of sandwich panel assembled container house and light steel framed house. The steel frames of wall body takes high quality cold rolling hot-dip galvanized plate as materials, and employs production process method of cold bending form steel plate. Interior wall is filled with the glass wool, thus container house has good heat preservation, heat insulation and sound insulation performance. Wall body can select many materials to vary appearance and modeling of house. Light composite wall greatly improves strength and comfort standard of light steel framed assembled container house.

(五) 海运改造式集装箱房屋

MODIFIED CONTAINER HOUSE

改造型集装箱房屋，由国际海运集装箱20'、40'、40HQ' 高和等型进行改造，或根据客户特殊要求定制非标海运集装箱，根据客户的需求进行门窗切割打磨。集装箱改造的活动房可移动、结构坚固，美观实用。改造集装箱房具有防腐、防火、防震、台风等许多性能，内部装修可塑性更强，内部美观舒适度高于夹芯板组装式集装箱房屋，并且保留了集装箱标准的外形尺寸，以便于吊装和运输。在使用和维护上简单方便，无需做整体基础，可整体移动，避免了重复拆搭，降低了工料费用。使用寿命较夹芯板组装式集装箱房屋更长。

Modified container house is fabricated by 20', 40', 40HQ' special international shipping container, or non-standard container by customized. We cut and polish windows and doors according to customer's demands. Modified container house can be mobile, good durability, long service life and beautiful practical. Also modified container house has the advantages of Prevention of Rusty/Inproof/quakeproof typhoon against and other good performance. Customer can choose more decoration materials to build the house more beautiful and comfortable, which is better than assembled sandwich panel container house. This type container house keeps the standard size of shipping container, so it is easy to hoist and transport. On respect of usage and maintenance, it is easy and convenient to construct without building foundation. The house can be moved as a whole, so that it saves the cost of assemble, disassemble and foundation respectively. The service life of modified container house is longer than assembled sandwich panel container house.



(六) 组装式集装箱房屋运输方式

TRANSPORTATION MODE OF ASSEMBLED CONTAINER HOUSE

组装式集装箱房屋的运输方式，主要分为散架打包式、单个打包架式、整箱运输式及整体打包运输式4种运输方式。每种运输方式都有各自的优点，由客户根据自身需求来选择不同的运输方式。

Transportation mode of assembled container house are mainly divided into four types: package in bulk, individual container house package and transportation, whole container house finished package and transportation, and entirely in bulk pack transportation. Each transportation way has its own merit, customer can choose proper transportation way according to their requirements.



◎ 散架打包运输
PACKAGE AND TRANSPORTATION IN BULK

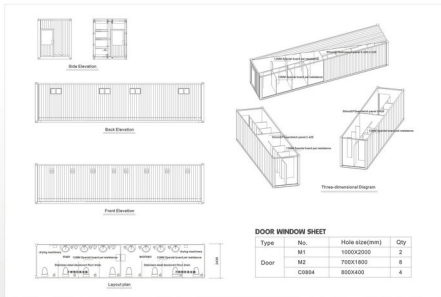
◎ 整箱成箱运输
WHOLE CONTAINER HOUSE FINISHED PACKAGE AND TRANSPORTATION

◎ 单个打包架运输
INDIVIDUAL CONTAINER HOUSE PACKAGE AND TRANSPORTATION

◎ 整体打包运输
ENTIRELY IN BULK PACK TRANSPORTATION

CONTAINER HOUSING PROJECT 集装箱房工程案例

工程名称：沙特改造集装箱厕所
 NAME OF THE PROJECT: Modified Container Toilet House—Saudi Arabia
 规格尺寸：40HQ 和 20'GP
 Specification: 40HQ and 20'GP



20尺改造集装箱房 20 FEET MODIFIED CONTAINER HOUSE



正视图
FRONT VIEW

侧视图
SIDE VIEW



外景
OUTSIDE VIEW

室内布置
INTERIOR LAYOUT

工程名称：南非德班集装箱

NAME OF THE PROJECT: Container House—Durban (South Africa)

规格尺寸：单体规格 2.5m*5.8m*2.74m Specification: Monomer size 2.5m*5.8m*2.74m



20尺拆装式集装箱房

20 FEET DISASSEMBLE CONTAINER HOUSE



印度20尺集装箱

INDIA 20 FEET CONTAINER HOUSE



澳大利亚特殊尺寸集装箱房

AUSTRALIA SPECIAL SIZE CONTAINER HOUSE



迪拜组合式集装箱房

DUBAI COMBINED CONTAINER HOUSE



安哥拉20尺集装箱房

ANGOLA 20 FEET CONTAINER HOUSE

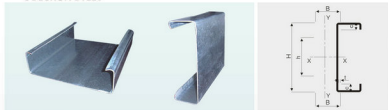


INTRODUCTION OF STEEL STRUCTURE HOUSE MATERIALS 钢结构房屋材料简介

(一) 钢构部分

STEEL FRAME

C型钢 C SECTION STEEL



△ C型钢断面尺寸 C SECTION STEEL SECTIONAL SIZE

C型檩条断面尺寸							
型号	断面尺寸 (mm)				孔距 (mm)	孔高 (mm)	备注
	H	B	B	t			
C80	80	40	40	15	2.0-3.0	不带孔	檩条型号也可根据用户要求制作 (可冲中孔)
C100	100	50	50	20	2.0-3.0	40	
C120	120	50	50	20	2.0-3.0	孔距可调	
C140	140	50	50	20	2.0-3.0	孔距可调	
C150	150	60	60	20	2.0-3.0	孔距可调	
C160	160	60	60	20	2.0-3.0	孔距可调	
C180	180	60	60	20	2.0-3.0	孔距可调	
C200	200	60	60	20	2.0-3.0	孔距可调	
C250	250	70	70	20	2.0-3.0	孔距可调	

楼承板 FLOOR DECKING STEEL SHEET

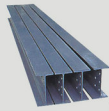


Z型钢 Z SECTION STEEL



△ Z型钢断面尺寸 Z SECTION STEEL SECTIONAL SIZE

Z型钢条断面尺寸							
型号	断面尺寸 (mm)					孔距 (mm)	备注
	H	B	b	G	t		
Z100	100	55	50	20	2.0-3.0	40	檩条型号也可根据用户要求制作 (可冲中孔)
Z120	120	55	50	20	2.0-3.0	孔距可调	
Z140	140	55	50	20	2.0-3.0	孔距可调	
Z150	150	67	61	18	2.0-3.0	孔距可调	
Z160	160	67	61	20	2.0-3.0	孔距可调	
Z180	180	67	61	20	2.0-3.0	孔距可调	
Z200	200	67	61	20	2.0-3.0	孔距可调	
Z250	250	78	72	20	2.0-3.0	孔距可调	
Z280	280	78	72	20	2.0-3.0	孔距可调	
Z300	300	78	72	20	2.0-3.0	孔距可调	



① 工字钢 I Beam

② H型钢 H Section Steel



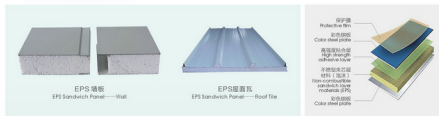
③ 方管 Square Tube

④ 圆管 Round Tube

(二) 围护系统

WALL AND ROOF SYSTEM

EPS夹芯板 EPS SANDWICH PANEL



EPS夹芯板是以彩色钢板为面层，以阻燃聚苯乙烯泡沫板为芯材，用双组份聚氨酯作为胶黏剂，经连续加热压复合成型，定尺同步切割而成的夹芯板。泡沫板通过胶黏剂将两层钢板复合成一体，起着承力作用，因此其抗压强度在100kPa左右。

EPS sandwich panel takes the color steel plates as surface layer, the flame-resistant polystyrene foam board as core material, and uses polyurethane as plastering agent. The panel is formed by continuous heat and compression, synchronous scale and cut. Under the combination of the polystyrene foam board and plastering agent, EPS panel can bear the heavy load, therefore its compressive strength is about 100kPa.

△ 夹芯板的规格：

彩钢厚度 0.3mm~0.6mm;
芯材厚度 50mm~250mm;
有效宽度 950mm、1150mm;
有效长度 根据客户需求定制。

EPS SANDWICH PANEL SPECIFICATION

Steel Sheet Thickness: 0.3mm~0.6mm;
Core Materials Thickness: 50mm~250mm;
Effective Width: 950mm、1150mm;
Effective Length: By Customized

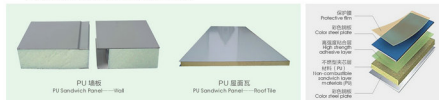
△ EPS夹芯板物理机械性能

EPS SANDWICH PANEL PHYSICAL AND MECHANICAL PROPERTIES

项目 Item	单位 Unit	性能指标 Index of Properties		
		I	II	III
表观密度 Apparent Density	kg/m ²	15.0	20.0	30.0
压缩强度 Compression Strength (在10%形变下的压缩应力) Compressive Stress Under 10% Deformation	KPa	60	100	150
导热系数 Thermal Conductivity Coefficient	w/(m.k)	0.041	0.041	0.041
水蒸气透湿系数 Water Vapor Permeability Coefficient	ng / Pa.m.s	9.5	4.5	4.5
吸水率 Water Absorbing Capacity	%	6	4	2
氧指数 Oxygen Index	%	30	30	30

说明: 类I 为不承重负荷, 类II 为承重负荷, 类III 为承重特大负荷。
Note: Class I does not bear load, Class II bears load, Class III bears heavy load.

聚氨酯夹芯板 POLYURETHANE SANDWICH PANEL



聚氨酯夹芯板用聚氨酯作芯材，其特性同样具有聚氨酯夹芯板的各种特点外，并具有不易燃烧，使用温度范围广，芯材使用温度在-196℃~+130℃，瞬时达+200℃。在低温甚至超低温环境中使用时收缩小、不脆化，是深冷（冷库）工程理想的绝热材料。在超低温下使用收缩小、不脆化、无毒、无腐蚀性，导热性能稳定的优点。

广泛用于钢结构厂房、简易活动房的墙面、墙体、空气净化器的吊顶与隔断。

Polyurethane panel takes the polyurethane as core material. Except having the same characteristics of the EPS sandwich panel, the PU sandwich panel possesses the features of being nonflammable, wide range of service temperatures. The core material application temperature is between -196°C and +130°C, the instant service temperature can be reached up to +200°C. When being used in low temperature environment, PU sandwich panel is small shrinkage and non-brittle. Therefore, it is an ideal constructive heat-insulating material for cold storage. Except that, PU sandwich panel has the advantages of being non-toxic, non-corrosiveness, stable heat conductivity. The panel is extensively used as roof tile, wall body, ceiling and partition wall in steel structure workshop and prefabricated house.

△ PU夹芯板物理机械性能

PU SANDWICH PANEL PHYSICAL AND MECHANICAL PROPERTIES

项目 Item	单位 Unit	性能指标 Index of Properties			
		I		II	
		A	B	A	B
密度 Density	kg/m ²	30	30	30	30
压缩强度 Compression Strength (在10%形变下的压缩应力) Compressive Stress Under 10% Deformation	KPa	100	100	100	150
导热系数 Thermal Conductivity Coefficient	w/(m.k)	0.022	0.027	0.022	0.027
水蒸气透湿系数 (23+2)℃/0%至85%RH Water Vapor Permeability Coefficient (23+2)℃/0% to 85%RH	ng / Pa.m.s	6.5		6.5	
吸水率 Water Absorbing Capacity	%	4		3	
燃烧性 Flammability	1级 垂直燃烧法 Grade I Vertical Combustion	平均燃烧时间 Average Burning Time(s)		30	30
	2级 水平燃烧法 Grade II Horizontal Combustion			250	250
		平均燃烧时间 Average Burning Time(s)		90	90
			平均燃烧强度 Average burning intensity (mm)		50

说明: 类I 为不承重负荷, 类II 为承重负荷, 类III 为承重特大负荷。
Note: Class I does not bear load, Class II bears load, Class III bears heavy load.

岩棉夹芯板 ROCK WOOL SANDWICH PANEL



岩棉板在自重、导热、压缩强度、吸水率等性能上比聚苯乙烯和聚氨酯的物理机械性能差，但是它具有可高达600℃的使用温度，不燃性A级的突出特点，因而扩大了夹芯板的使用范围，成为适用于防火等级要求高的建筑材料的轻型材料。

Rock wool sandwich panel is not better than polystyrene and polyurethane sandwich panel with regard to sole weight, heat conduction, compressive strength, water absorption rate and other physical and mechanical properties. However, it can be used under the service temperature of 600°C. Besides, this type panel possesses the outstanding feature of being level A incombustibility, thus rock wool sandwich panel serviceable range is expanded to light weight construction materials for high requirement on fire-protection rating.

岩棉夹芯板物理机械性能 ROCK WOOL SANDWICH PANEL PHYSICAL AND MECHANICAL PROPERTIES

密度 Density(kg/m³)				导热系数 Thermal Coefficient K(MPa)	有机碳含量 Organic Content (%)	不燃性 Non-Flammable	最高温度 Maximum temperature (°C)
密度 Density	偏差范围 Limit Deviation		合格品 Qualified				
80	±10	±15	±20	≤0.044	≤4.0	A级 A grade	400
100				≤0.046			
120				≤0.046			
150				≤0.048			
160				≤0.048			600

其他围护材料 OTHER MATERIALS



(三) 配件部分 ACCESSORIES



AUTOMATIC POWDER COATING LINE 喷涂产线

本公司拥有珠三角最大型轨道式全自动喷涂产线，涂装设备采用德国进口全自动喷涂作业技术，挂具单点重量为1000KG,总设计重量为100吨，可加工4吨以下的各种五金重型机械、工程护栏、灯杆、电梯配件、钢构厂房等大型钢结构部件，配电柜等各种五金重型部件，加工尺寸在（长X宽X高）12米X1米X3.7米以内的金属工件。

Our company has the biggest heavy rail-mounted automatic spraying production line in Chu Chiang Delta. The spraying equipment introduces advanced German automatic powder coating operation technology, the single hangs weight is 1000 KG, and the total weight that track can load reaches to 100 tons. We can process various kinds of heavy hardware machinery, engineering guardrail, light pole, elevator accessories, steel structure workshop, distributor box and other large steel structure parts that are less than 4 tons. The processing dimension of hardware accessories is within 12 meters *1 meters *3.7 meters/length*width*height.



△ 自动喷涂机器
Automatic Powder Coating Machine



△ 高压气枪除尘
Dust Removing by High-pressed Air Gun



△ 喷涂大型构件
Steel Structure Powder Coating



△ 轨道式全自动喷涂产线
Rail-mounted Automatic Spraying Production Line



△ 喷涂生产中
Powder Coating Producing



△ 工件悬挂
Hanging the Steel Component

POWDER COATING PROJECT CASES 喷涂工程案例

🌀 工程名称：佛山市美嘉陶瓷机械
NAME OF THE PROJECT: Foshan Meija Ceramic Machinery



🌀 工程名称：广东信源物流设备有限公司-报刊亭
NAME OF THE PROJECT: Guangdong Xinyuan Logistics Equipment Co.,Ltd---Newspaper Kiosk



🌀 工程名称：护栏喷涂加工
NAME OF THE PROJECT: Railing Coating Processing

